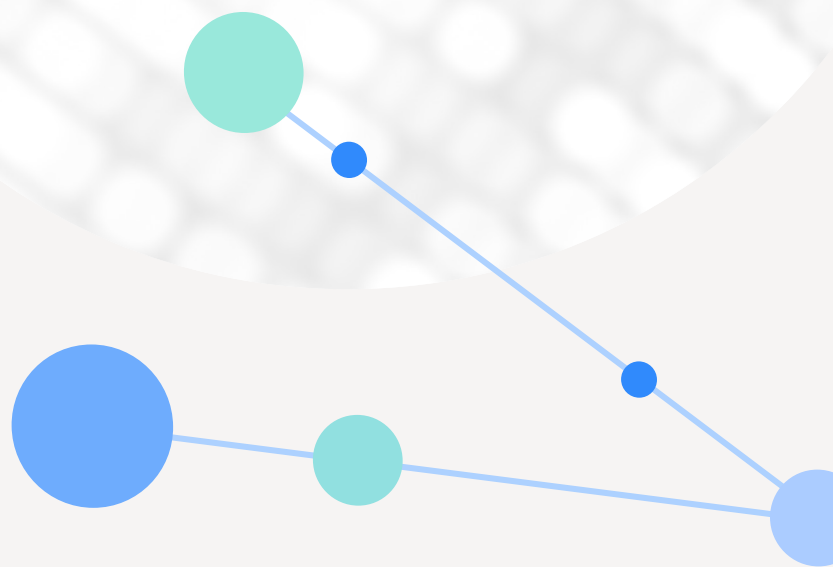


# PointGrab™ Information Security Highlights



# About PointGrab™

Leveraging its ground-breaking sensing technology, PointGrab™ is pioneering the next generation of office workspace optimization solutions. Its flagship product, PointGrab™, is a highly advanced facility management sensing solution that provides insight into occupant behavior and space utilization while ensuring individual privacy. PointGrab™ is taking the lead in this space and collaborates with many partners in the facility management and building ecosystems to deliver flexible and efficient solutions that improve commercial real estate business performance.

PointGrab™ is a ground-breaking solution that enables automation of business and commercial buildings, by sensing and processing information about where and how occupants use the building. PointGrab™ allows

you to streamline human resource management and optimize the allocation of physical resources such as workstations, meeting rooms, lighting, HVAC, and more, leading to significant cost-savings and improved efficiency. The PointGrab™ system is comprised of highly intelligent image-based sensors and a cloud-based management system.

As a leading machine learning and computer vision company, PointGrab™ applies its superior deep-learning technology to the building automation ecosystem, where opportunities to gather data are abundant but efficient, and real-time analytics are lacking.



# Security Overview

The PointGrab™ platform is designed with non-intrusiveness, privacy, and anonymity as its pillars. It successfully passed strenuous Penetration Testing by a third-party independent company and was vetted by Fortune 500 financial organizations.

## General Security:

- ISO 27001 certified.
- Fully comply with GDPR.
- Cloud AWS server, hosted in the UK.

## Privacy:

- PointGrab™ solution does not retain private identifiable information.
- All data captured by sensors is completely anonymous.
- Image is processed on-board only with no retention or transmission out of the device.
- Images are processed by the sensor at 10 fps and immediately discarded.

## Data Security:

- Each customer has a dedicated partition on the multi-tenant cloud.
- Each partition is separated and can be accessed only by a predefined user with RBAC model.
- 2-way certification between the unique device and the cloud platform (IoT CA cert, which ensures that it is connected to IoT MQTT Broker).
- The PointGrab™ sensor supports network security standard IEEE 802.1X.
- Confidentiality and data integrity (in transit) are provided by the TLS protocol.
- Data at rest is encrypted using AES-256.
- Authentication and authorization mechanisms including enterprise SSO integration
- API security - Telemetry data shared only with customers' URLs

Security considerations have been and are included throughout the planning, design, development, testing, and release phases of the PointGrab™ lifecycle. These include incorporating proper security principles, as described below, and using the OWASP Top 10 where possible.

## Hardened architecture:

- Limited port configuration both on platform and device
- Secure boot process uses hardware root of trust, assures software integrity

## Data lifecycle:

### CREATE

- Sensor ID and spaces are uploaded to the PointGrab Management Platform under the specific customer hierarchy (name, site, building, floor)
- Sensors capture detection area images, apply computer vision algorithms and neural networks locally on the device to generate unique granular data

### SENT

- Data is sent an encrypted MQTT message with this metadata to the cloud. The image is immediately discarded and not stored on the device or cloud.
- Sensor connects using local WAN credentials such as 802.1X or secured Wi-Fi connection and can use local HTTPS proxy

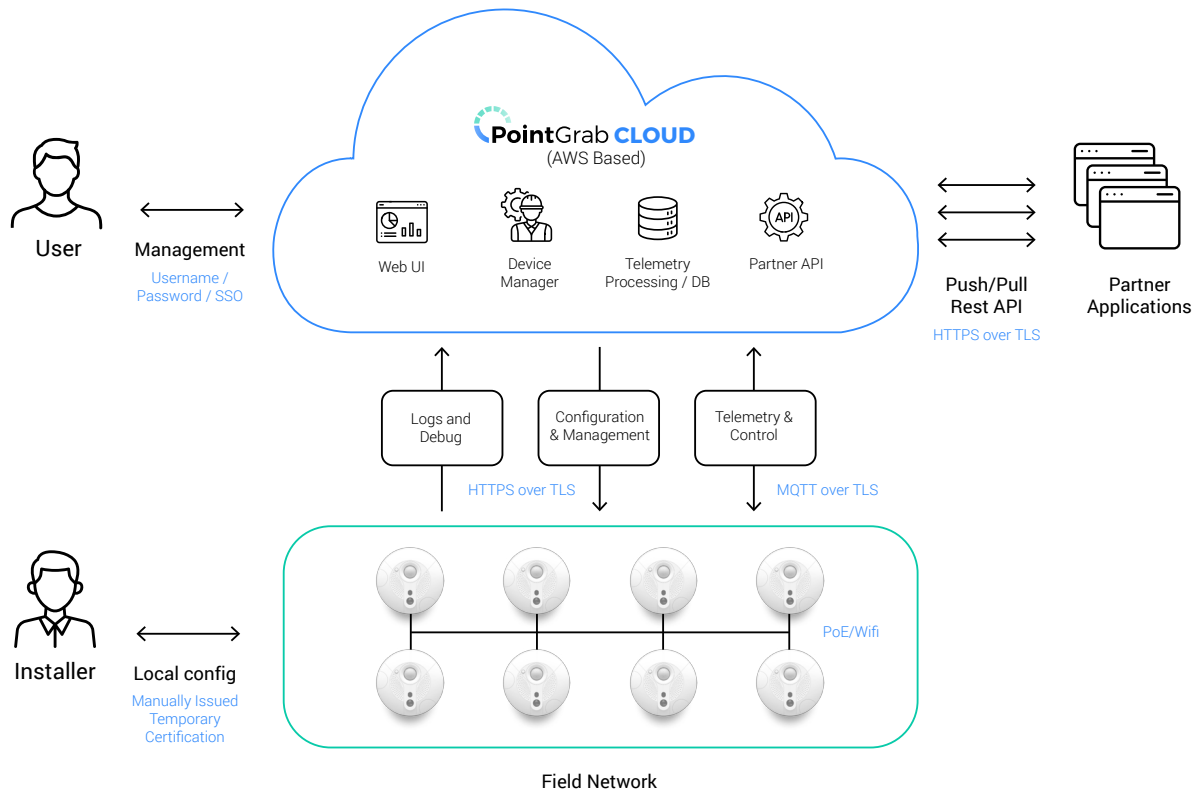
### STORE

- Sensors data is stored on Telemetry DB for fast retrieval
- Sensor IDs and office spaces names are stored on Device Manager DB.
- All data is encrypted at rest
- Access to the data is via secure API or user credentials

### DECOMMISSION

- Upon termination of subscription, customer data is erased from both the cloud Platform and the sensor remotely or locally (factory settings)

# Solution high-level Architecture



## Certifications

